

For combination with:
DC-Micromotors:
M3138U, MD3530, MD3626, MD3644

Series MD35P

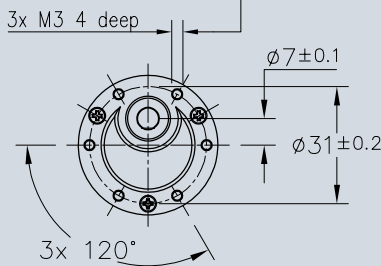
| | MD35P |
|-------------------------------------|-----------------|
| Housing material | zinc die cast |
| Geartrain material | metal, plastic |
| Recommended max. input speed for: | |
| - continuous operation | 5,000 rpm |
| Backlash, at no-load | ≤ 3° |
| Bearings on output shaft | sintered bronze |
| Shaft load, max.: | |
| - radial (10 mm from mounting face) | ≤ 25 N |
| - axial | ≤ 20 N |
| Shaft press fit force, max. | ≤ 90 N |
| Shaft play (on bearing output): | |
| - radial | ≤ 0.1 mm |
| - axial | ≤ 0.35 mm |
| Operating temperature range | - 10 to + 60 °C |

Specifications

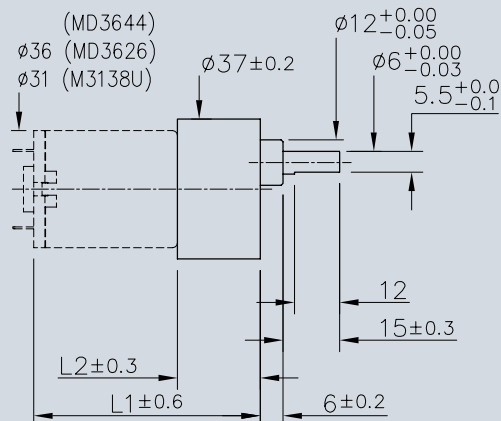
| reduction ratio (nominal) | number of gear stages | weight sintered type | length without motor L2 | length with motor MD3138 L1 | length with motor MD3530 L1 | length with motor MD3626 L1 | length with motor MD3644 L1 | output torque | | direction of rotation (reversible) | efficiency |
|---------------------------|-----------------------|----------------------|-------------------------|-----------------------------|-----------------------------|-----------------------------|-----------------------------|---------------------------------|-----------------------------------|------------------------------------|------------|
| | | | | | | | | continuous operation M max. mNm | intermittent operation M max. mNm | | |
| 6:1 10:1 | 2 | 89.4 g | 19.0 mm | 57.0 mm | 49.0 mm | 45.0 mm | 63.0 mm | 98 | 294 | CW | 81 |
| 18:1 25:1 | 3 | 96.5 g | 21.5 mm | 59.5 mm | 51.5 mm | 47.5 mm | 65.5 mm | 98 | 294 | CCW | 73 |
| 30:1 | 3 | 96.5 g | 21.5 mm | 59.5 mm | 51.5 mm | 47.5 mm | 65.5 mm | 196 | 588 | CCW | 73 |
| 50:1 60:1 | 4 | 104.6 g | 24.0 mm | 62.0 mm | 54.0 mm | 50.0 mm | 68.0 mm | 294 | 882 | CW | 66 |
| 75:1 90:1 | 4 | 104.6 g | 24.0 mm | 62.0 mm | 54.0 mm | 50.0 mm | 68.0 mm | 392 | 1,176 | CW | 66 |
| 100:1 | 4 | 104.6 g | 24.0 mm | 62.0 mm | 54.0 mm | 50.0 mm | 68.0 mm | 588 | 1,764 | CW | 66 |
| 120:1 150:1 180:1 | 5 | 110.7 g | 26.5 mm | 64.5 mm | 56.5 mm | 52.5 mm | 70.5 mm | 588 | 1,764 | CCW | 59 |
| 200:1 250:1 | 5 | 110.7 g | 26.5 mm | 64.5 mm | 56.5 mm | 52.5 mm | 70.5 mm | 588 | 1,764 | CCW | 59 |
| 270:1 300:1 | 5 | 110.7 g | 26.5 mm | 64.5 mm | 56.5 mm | 52.5 mm | 70.5 mm | 588 | 1,764 | CCW | 59 |
| 400:1 500:1 540:1 | 6 | 118.8 g | 29.0 mm | 67.0 mm | 59.0 mm | 55.0 mm | 73.0 mm | 588 | 1,764 | CW | 53 |
| 600:1 750:1 900:1 | 6 | 118.8 g | 29.0 mm | 67.0 mm | 59.0 mm | 55.0 mm | 73.0 mm | 588 | 1,764 | CW | 53 |
| 1,000:1 | 6 | 118.8 g | 29.0 mm | 67.0 mm | 59.0 mm | 55.0 mm | 73.0 mm | 588 | 1,764 | CW | 53 |
| 1,500:1 1,800:1 3,000:1 | 7 | 126.0 g | 31.5 mm | 69.5 mm | 61.5 mm | 57.5 mm | 75.5 mm | 588 | 1,764 | CCW | 48 |

weight includes washer, pinion and screws

Orientation with respect to motor terminals not defined



Front View



MD35P

Series MD35P

| Part number | Ratio | Description | Stocked item |
|--------------|--------|--------------------------|--------------|
| MD35P 6:1 | 6:1 | Sintered bronze bearings | X |
| MD35P 10:1 | 10:1 | Sintered bronze bearings | X |
| MD35P 18:1 | 18:1 | Sintered bronze bearings | X |
| MD35P 25:1 | 25:1 | Sintered bronze bearings | X |
| MD35P 30:1 | 30:1 | Sintered bronze bearings | X |
| MD35P 50:1 | 50:1 | Sintered bronze bearings | X |
| MD35P 60:1 | 60:1 | Sintered bronze bearings | X |
| MD35P 75:1 | 75:1 | Sintered bronze bearings | X |
| MD35P 90:1 | 90:1 | Sintered bronze bearings | X |
| MD35P 100:1 | 100:1 | Sintered bronze bearings | X |
| MD35P 120:1 | 120:1 | Sintered bronze bearings | X |
| MD35P 125:1 | 125:1 | Sintered bronze bearings | X |
| MD35P 150:1 | 150:1 | Sintered bronze bearings | X |
| MD35P 180:1 | 180:1 | Sintered bronze bearings | X |
| MD35P 200:1 | 200:1 | Sintered bronze bearings | X |
| MD35P 250:1 | 250:1 | Sintered bronze bearings | X |
| MD35P 270:1 | 270:1 | Sintered bronze bearings | X |
| MD35P 300:1 | 300:1 | Sintered bronze bearings | X |
| MD35P 400:1 | 400:1 | Sintered bronze bearings | X |
| MD35P 500:1 | 500:1 | Sintered bronze bearings | X |
| MD35P 540:1 | 540:1 | Sintered bronze bearings | X |
| MD35P 600:1 | 600:1 | Sintered bronze bearings | X |
| MD35P 750:1 | 750:1 | Sintered bronze bearings | X |
| MD35P 900:1 | 900:1 | Sintered bronze bearings | X |
| MD35P 1000:1 | 1000:1 | Sintered bronze bearings | X |
| MD35P 1500:1 | 1500:1 | Sintered bronze bearings | X |
| MD35P 1800:1 | 1800:1 | Sintered bronze bearings | X |
| MD35P 3000:1 | 3000:1 | Sintered bronze bearings | X |